

This project received grant aid from the Leitrim Development Company Rural Development Programme which is financed by the Irish Government under the Rural Development Programme Ireland 2007-2013 and by the European Agricultural Fund for Rural Development: Europe investing in Rural Areas.



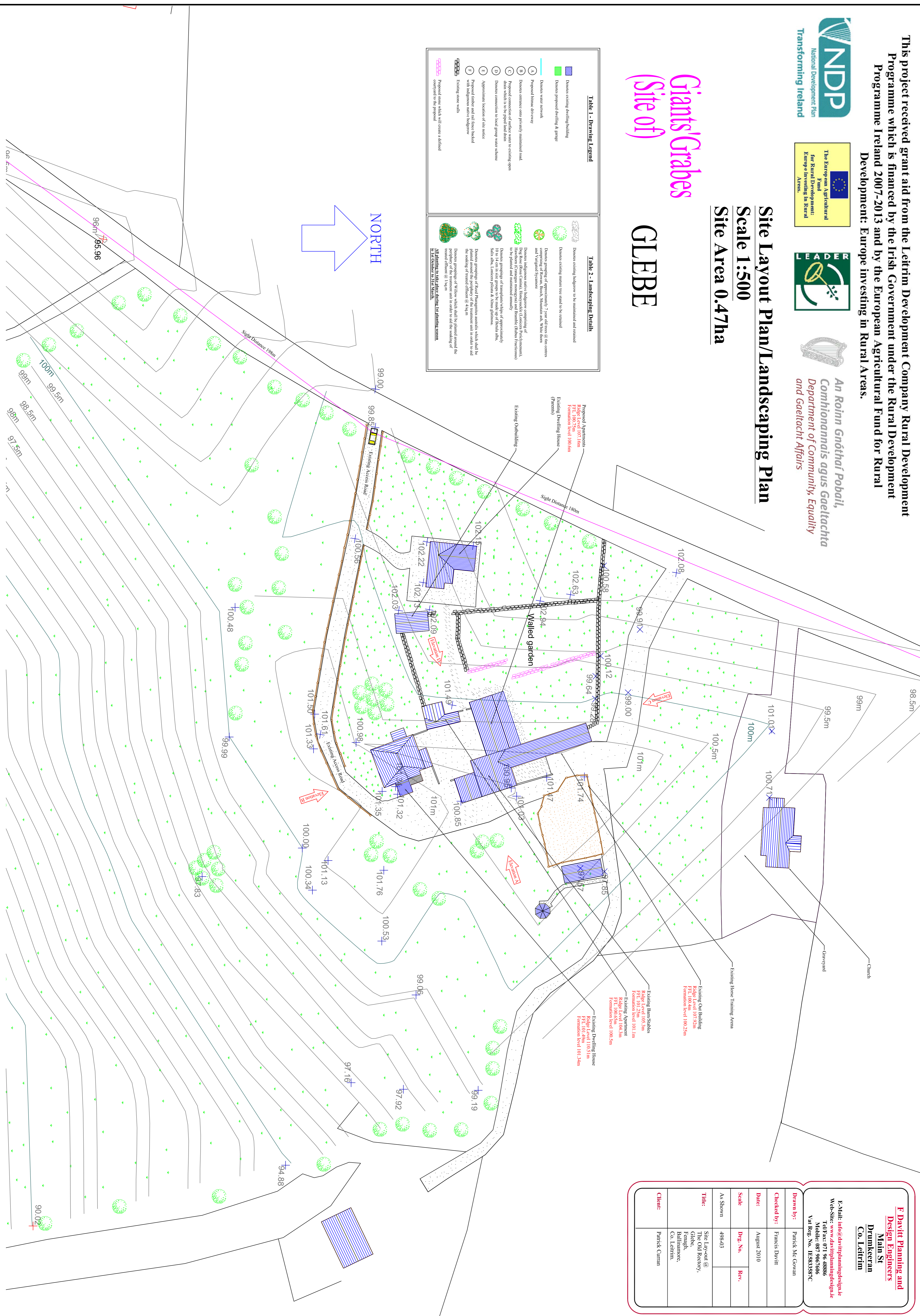
An Roinn Gnóthaí Pobail,
Comhannannais agus Gaeltachta
Department of Community, Equality
and Gaeltacht Affairs

Site Layout Plan/Landscaping Plan

Scale 1:500
Site Area 0.47ha

Giants' Grabes (Site of) GLEBBE

Table 1 - Drawing Legend		Table 2 - Landscaping Details	
	Dwoses existing dwelling building		Dwoses existing hedgerows to be maintained and retained
	Dwoses proposed dwelling & garage		Dwoses existing mature trees stand to be retained
	Dwoses water network		Dwoses proposed perimeter of 7 year old trees @ tree centres and 10 year old trees @ tree centres and 15 year old trees @ tree centres and 20 year old trees @ tree centres
	Proposed blank driveway		Dwoses hedgerow status between comprising of Big Trees (Quercus robur), Hawthorn (Crataegus monogyna) and Bramble (Rubus fruticosus) to be planted and maintained annually
	Dwoses entrance onto privately maintained road		Dwoses proposed perimeter of approximately 10 year old trees @ tree centres and 15 year old trees @ tree centres and 20 year old trees @ tree centres
	Proposed landscaping of driveway to existing open driveway which is to be used for parking		Dwoses proposed perimeter of approximately 10 year old trees @ tree centres and 15 year old trees @ tree centres and 20 year old trees @ tree centres
	Dwoses connection to local group water scheme		Dwoses proposed perimeter of approximately 10 year old trees @ tree centres and 15 year old trees @ tree centres and 20 year old trees @ tree centres
	Dwoses connection to local group water scheme		Dwoses proposed perimeter of approximately 10 year old trees @ tree centres and 15 year old trees @ tree centres and 20 year old trees @ tree centres
	Approximate location of site entrance		Dwoses proposed perimeter of approximately 10 year old trees @ tree centres and 15 year old trees @ tree centres and 20 year old trees @ tree centres
	Proposed timber and rail fence backed with high pressure treated sleepers		Dwoses proposed perimeter of approximately 10 year old trees @ tree centres and 15 year old trees @ tree centres and 20 year old trees @ tree centres
	Existing stone walls		Dwoses proposed perimeter of approximately 10 year old trees @ tree centres and 15 year old trees @ tree centres and 20 year old trees @ tree centres
	Proposed stone which will create a defined boundary to the proposal		Dwoses proposed perimeter of approximately 10 year old trees @ tree centres and 15 year old trees @ tree centres and 20 year old trees @ tree centres



F Davitt Planning and Design Engineers
Main St
Drumkeeran
Co. Leitrim

E-Mail: info@davittplanningdesign.ie
Web-Site: www.davittplanningdesign.ie
Tel/Fax: 071 96 48886
Mobile: 087 9067606
Vat Reg. No.: IE583387C

Drawn by: Patrick Mc Gowan
Checked by: Francis Davitt
Date: August 2010
Scale: 498:03
Title: Site Lay-out @ The Old Rectory, Fennell, Ballinmore, Co. Leitrim.
Client: Patrick Curran